

EPSON
EXCEED YOUR VISION

LIMITLESS

THE EPSON HOME THEATRE PROJECTOR EXPERIENCE



Think big. We did.

300
762 cm

Screen size matters.

Epson brings you Home Theatre Projectors capable of projecting the biggest screen you have ever seen.



beyond **belief**
beyond **action**
beyond **breathhtaking**
beyond **entertainment**

Enter a world where experience goes beyond just words.

Where the latest blockbusters beam your imagination to a world meant only for a handful.

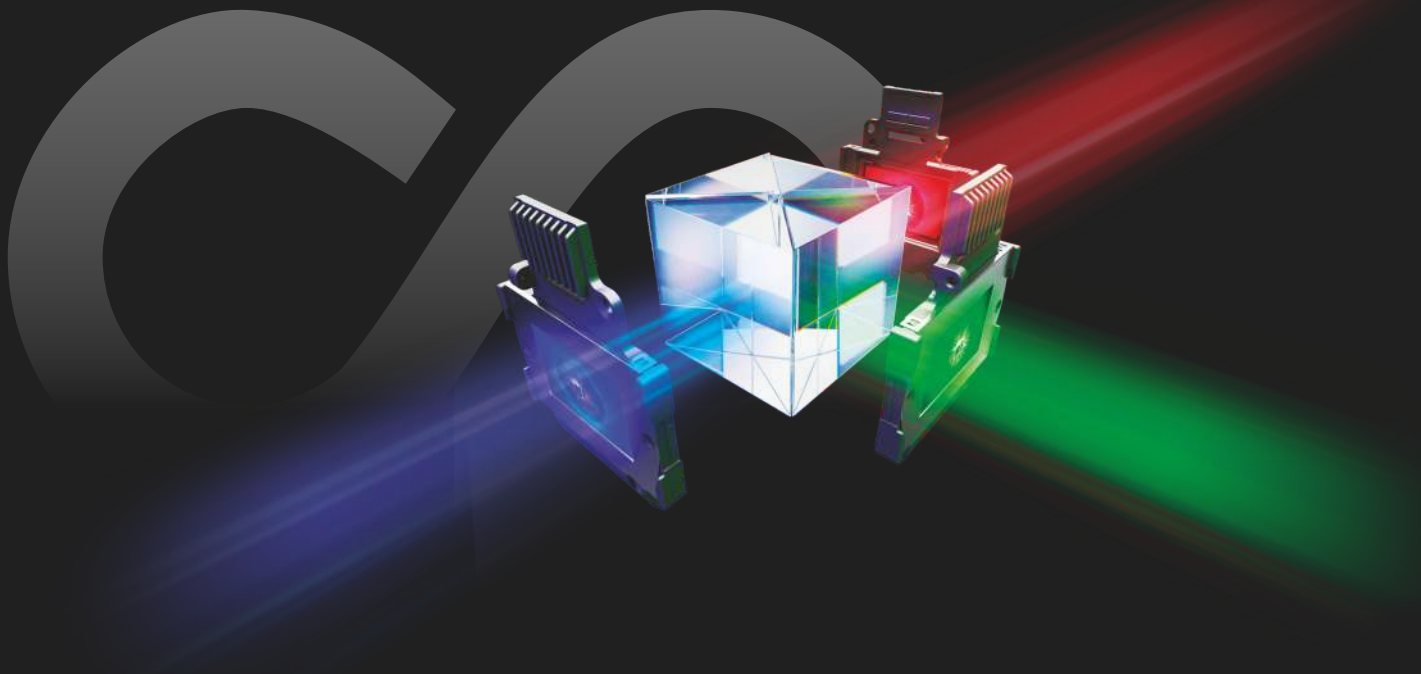
Where the action on the pitch becomes the arena of the Titans.

Where the online web of drama wraps itself around you like a larger-than-life canvas.

Where war games aren't won by the fainthearted.

Are you ready to enter the world of Limitless?

The difference is a bright idea.



We know you love your entertainment. So we created a technology that makes every pixel of your screen three times brighter than the rest.

This is the Epson proprietary 3LCD technology. Created with the sole purpose of breathing life into every frame, and on a scale, no one ever thought possible.

It's little surprise then that Epson Home Theatre Projectors have been the World's No.1 for 13 years straight.



3LCD

GET
UP TO
3X
BRIGHTER COLOURS*

Before you make your buy, learn more about Colour Brightness at www.colorlightoutput.com.

With a home theatre projector, the elevated entertainment experience is not limited to one form of entertainment. Epson Home Theatre Projectors are great for:



Watch movies the way they are meant to be watched.
Get some popcorn and bring the cinema home.

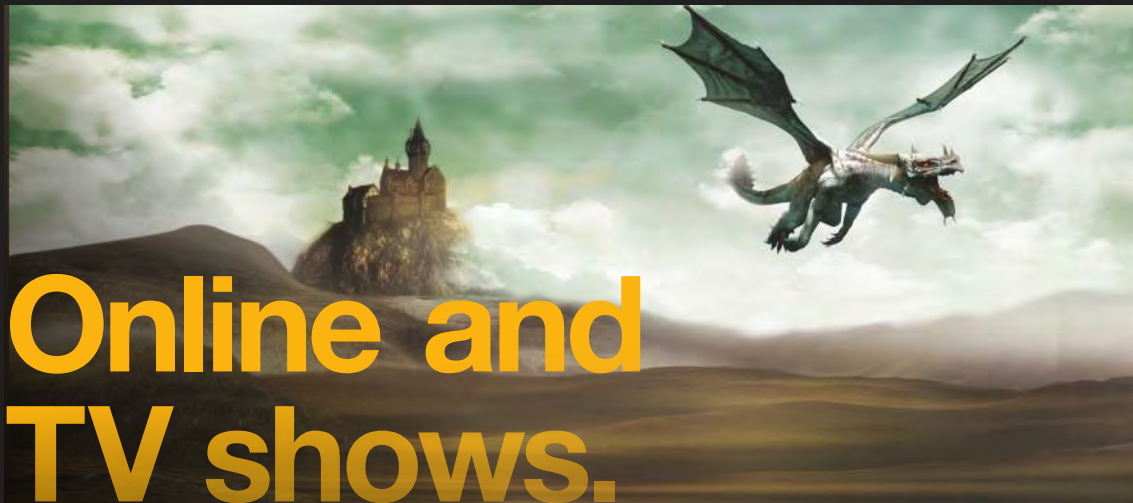


See the snipers before they see you. First-person, racing, sports, strategy or any other kind of game - take advantage of the big screen and get right into the midst of the action.





Head to the stadium within the comfort of your home. In euphoria and disappointment - take in the action and be one with the sport.



Give HD streaming and HD channels the screen size they deserve. Watch drama come to life at home like never before.

Fit for any home. Especially yours.

Epson Home Theatre Projectors offer

Super-easy installation

But if you are uncertain, leave it to our expert always-available support team.

Light friendly images

Our ultra-bright lamps allow you to leave the blinds open if you need to.

Low maintenance

With long lamp life and reliable build quality, you have less to worry about.

The world's best for more than a reason



Flexibility is yours - with the placement and mounting options that our projectors offer.

Find your entertainment in anything. With integrated support for multiple connection methods, connect any device of your choice and take your seat amidst the action.

Our superior image enhancement technology, works alongside noise reduction to offer you beauty in entertainment like never before.

Let entertainment leap out. Epson projectors are equipped with special 3D functions including 2D-3D conversion and a high refresh rate that brings the excitement close to you like no other.

Our projectors are powered by Epson-pioneered 3LCD technology that produce equal Colour and White brightness delivering up to 3X brighter colours.

Epson Home Theatre Projectors

the Budget Friendly Marvel



EH-TW650

**FULL
HD**

300
↗
↙
762 cm

MHL
Mobile High-Definition Link

Extreme clarity with
Full-HD resolution

Elegantly compact

Impressive brightness
of 3100 lumens

Comes with
MHL connectivity

SPECIFICATIONS

Projection Technology **RGB Liquid Crystal Shutter Projection System**

Specifications of Main Parts

LCD	Size	1.55 cm wide panel (D10)
	Native Resolution	1080p
Projection Lens	Type	Optical Zoom (Manual) / Focus (Manual)
	F-Number	1.58 - 1.70
	Focal Length	18.2 mm - 29.2 mm
	Zoom Ratio	1 - 1.2
	Throw Ratio	1.02 - 1.23 (Wide - Tele)
Lamp	Type	210 W UHE
	Life (Normal / Eco)*1	4,500 hours / 7,500 hours

Screen Size (Projected Distance)

Zoom : Wide	67 cm – 686 cm (0.67 m - 6.86 m)
Zoom : Tele	81 cm – 823 cm (0.81 m - 8.28 m)
Standard Size	152.4 cm screen (1.35 m - 1.64 m)

Brightness*2

Colour Light Output (Normal)	3,100 lm
White Light Output (Normal/Eco)	3,100 lm / 1,925 lm
Contrast Ratio	15,000:1

Geometric Correction

Vertical / Horizontal Keystone	±30° / ±30° (Slide Bar)
Auto Keystone Correction	Yes (Vertical)
Horizontal Slide Keystone Correction	Yes
Quick Corner	Yes

Lens Shift Range

Lens Shift	N/A
------------	-----

Connectivity

Analog Input	D-Sub 15pin	1 (Blue)
	Composite	1 (Yellow)
	S-video	N/A
	Component	N/A
Digital Input	HDMI	2 (1 MHL)
Audio In		2 RCA (White x 1, Red x 1)
Audio Out		N/A
USB Interface		
	USB Type A	1 (for USB Memory, USB Document Camera, Firmware Update)
	USB Type B	1 (for USB Memory, USB Document Camera, Firmware Update)
Network	Wireless	Built-in

Wireless Specifications (Wireless LAN)

Supported Speed For Each Mode	
IEEE 802.11b	11 Mbps *3
IEEE 802.11g	54 Mbps *3
IEEE 802.11n	130 Mbps *3
Supported Connection Mode	Infrastructure, Access Point
Wireless LAN Security	Quick: WPA2-PSK, Advanced: WPA/WPA2-PSK

Wireless Specifications (Screen Mirroring)

Supported Speed (For Each Mode)	N/A
Supported Connection Mode	N/A
Supported Security Type	N/A

Adjustment Functions

Frame Interpolation	N/A
Detail Enhancement	Yes
Split Screen	N/A
Aspect Mode	N/A

3D Features

3D Display	N/A
2D - 3D Conversion	N/A
3D Format	N/A
3D Depth	N/A

Operating Temperature

5°C - 35°C <41°F - 95°F> (0 m / 0 ft - 2,286 m / 7,500 ft)
5°C - 30°C <41°F - 86°F> (over 2,286 m / 7,500 ft)
(20% - 80% humidity, No condensation)

Operating Altitude

0 m - 3,000 m <0 ft - 9,843 ft>
(over 1500 m / 4,921 ft: with high altitude mode)

Direct Power On / Off

Yes / N/A

Start-Up Period

Under 6 seconds (Warm-up period: 30 seconds)

Cool Down Period

Instant Off

Power Supply Voltage

100 V - 240 V AC ±10%, 50/60 Hz
--

Power Consumption (220 V - 240 V)

Lamp On (Normal / Eco)	298 W / 219 W
Standby (Network On / Off)	2.0 W / 0.2 W

Dimension Excluding Feet

249 mm (D) x 302 mm (W) x 87 mm (H)
--

Weight

Approx. 2.7 kg

Fan Noise (Normal / Eco)

37 dB / 28 dB

Warranty

2 Years for projector against standard manufacturing defects, 1 Year or 1000 hours on Lamp, whichever comes first
--

Supplied Accessories

Power Cable: 1.8 m
Remote Control: Yes, with Alkaline AA Battery x 2

Optional Accessories

Spare Lamp: ELPLP96
Air Filter: ELPAF32
Ceiling Mount (White Colour): ELPMB23
Soft Carrying Case: ELPKS69

the Attention-grabber



EH-TW5650

FULL
HD

3D

300
762 cm

MHL
Mobile High-Definition Link

Fast mode for an accelerated gaming experience

Stylishly bold statement-making design

MHL, Epson iProjection and Network connectivity

Split screen option for parallel entertainment

SPECIFICATIONS

Projection Technology **RGB Liquid Crystal Shutter Projection System**

Specifications of Main Parts

LCD	Size	0.61" wide panel (D10, C2Fine,10Bit)
	Native Resolution	1080p
Projection Lens	Type	Optical Zoom (Manual) / Focus (Manual)
	F-Number	1.51 - 1.99
	Focal Length	18.2 mm - 29.2 mm
	Zoom Ratio	1 - 1.6
	Throw Ratio	1.33 - 2.16 (Wide - Tele)
Lamp	Type	200 W UHE
	Life (Normal / Eco)*1	4,500 hours / 7,500 hours

Screen Size (Projected Distance)

Zoom : Wide	30" - 300" (0.87 m - 8.9 m)
Zoom : Tele	30" - 300" (1.42 m - 14.5 m)
Standard Size	80" screen (2.35 - 3.82 m)

Brightness*2

Colour Light Output (Normal)	2,500 lm
White Light Output (Normal/Eco)	2,500 lm / 1,650 lm

Contrast Ratio **60,000:1**

Internal Speaker(s)

Sound Output **10 W Monaural**

Geometric Correction

Vertical / Horizontal Keystone	±30° / ±30° (Slide Bar)
Auto Keystone Correction	Yes (Vertical)
Horizontal Slide Keystone Correction	Yes
Quick Corner	Yes

Lens Shift Range

Lens Shift **Vertical: +45% to +60%**

Connectivity

Analog Input	D-Sub 15pin	1 (Blue)
	Composite	N/A
	S-video	N/A
	Component	N/A
Digital Input	HDMI	2 (1 x MHL)
Audio In		N/A
Audio Out		Stereo Mini Jack x 1
USB Interface	USB Type A	1 (for 1000mA Power Supply, Slideshow, Firmware Update)
	USB Type B	1 Mini-USB (for Service)
Network	Wireless	Built-in

Wireless Specifications (Wireless LAN)

Supported Speed For Each Mode

IEEE 802.11b	11 Mbps *3
IEEE 802.11g	54 Mbps *3
IEEE 802.11n	130 Mbps *3

Supported Connection Mode **Infrastructure, Access Point**

Wireless LAN Security **Quick: WPA2-PSK, Advanced: WPA/WPA2-PSK**

Wireless Specifications (Screen Mirroring)

Supported Speed For Each Mode

IEEE 802.11g (2.4GHz)	54 Mbps *3
IEEE 802.11n (2.4GHz)	130.0 Mbps *3
IEEE 802.11a (5GHz)	54 Mbps *3,
IEEE 802.11n (5GHz)	270.0 Mbps *3,
IEEE 802.11ac (5GHz)	780Mbps *3

Supported Connection Mode **Wi-Fi Direct**

Supported Security Type **WPA2-PSK (AES)**

Adjustment Functions

Frame Interpolation	Yes
Detail Enhancement	Yes
Split Screen	Yes
Aspect Mode	Yes (Auto / Normal / Full / Zoom)

3D Features

3D Display	Yes
2D - 3D Conversion	Yes
3D Format	Yes
3D Depth	Yes

Operating Temperature

5°C - 35°C <41°F> - 95°F> (0 m / 0 ft - 2,286 m / 7,500 ft)
5°C - 30°C <41°F> - 86°F> (over 2,286 m / 7,500 ft)
(20% - 80% humidity, No condensation)

Operating Altitude

0 m - 3,000 m <0 ft - 9,843 ft>
(over 1500 m / 4,921 ft: with high altitude mode)

Direct Power On / Off

Yes / N/A

Start-Up Period

Under 15 seconds (Warm-up period: 30 seconds)

Cool Down Period

Instant Off

Power Supply Voltage

100 V - 240 V AC ±10%, 50/60 Hz

Power Consumption (220 V - 240 V)

Lamp On (Normal / Eco) **296 W / 227 W**

Standby (Network On / Off) **2.0 W / 0.2 W**

Dimension Excluding Feet

278 mm(D) x 309 mm(W) x 107 mm(H)

Weight

Approx. 3.5 kg

Fan Noise (Normal / Eco)

37 dB / 27 dB

Warranty

2 Years for projector against standard manufacturing defects, 1 Year or 1000 hours on Lamp, whichever comes first

Supplied Accessories

Power Cable: 3 m
Remote Control: Yes,
with Alkaline AA Battery x 2
Warranty Card

Optional Accessories

Spare Lamp: ELPLP96
Air Filter: ELPAF55
Ceiling Mount (White Colour):
ELPMB23
3D Glasses: ELPGS03 (RF Type)
3D Glasses Charger: ELPAC01

the Party Starter



EH-TW6700



Superior dual
speaker audio

MHL and Bluetooth
connectivity

Picture perfected with
auto-colour optimiser

Lens shift for easy
and flexible placement

SPECIFICATIONS

Projection Technology **RGB Liquid Crystal Shutter Projection System**

Specifications of Main Parts

LCD	Size	0.61" wide panel (D10, C2Fine,10Bit)
	Native Resolution	1080p
Projection Lens	Type	Optical Zoom (Manual) / Focus (Manual)
	F-Number	1.51 - 1.99
	Focal Length	18.2 mm - 29.2 mm
	Zoom Ratio	1 - 1.6
	Throw Ratio	1.32 - 2.15 (Wide - Tele)
Lamp	Type	250 W UHE
Life (High / Medium / Eco)*1		3,500 hours / 4,000 hours / 5,000 hours

Screen Size (Projected Distance)

Zoom : Wide	30" - 300" (0.87 m - 8.9 m)
Zoom : Tele	30" - 300" (1.42 m - 14.5 m)
Standard Size	100" screen (2.95 m - 4.8 m)

Brightness*2

Colour Light Output (Normal)	3,000 lm
White Light Output (High/Medium/Low)	3,000 lm / 2,700 lm / 2,000 lm

Contrast Ratio **70,000:1**

Internal Speaker(s)

Sound Output **10 W x 2 Stereo**

Geometric Correction

Vertical / Horizontal Keystone **±30° / ±30°**

Quick Corner **Yes**

Lens Shift Range

Vertical Lens Shift **±60.0%** (H Center, Manual)

Horizontal Lens Shift **±24.0%** (V Center, Manual)

Connectivity

Analog Input	D-Sub 15pin (Blue-molding) x 1
Digital Input	HDMI x 2 (1 x MHL)
HDMI (Wireless HD)	N/A
Audio Out	Stereo Mini Jack x 1
USB Interface	
USB Type A	2 (1 port for Slideshow, Firmware update, Wireless LAN, The other port for media streaming device)
Micro USB Type B	1 mini-USB (for service)
Control I/O	
RS-232C	N/A
Trigger-Out (12V)	N/A
Network	
Wired LAN	N/A
Wireless	Optional (ELPAP10)

WirelessHD Transmitter I/O

HDMI (Input)	N/A
HDMI (Output)	N/A
Audio Output	N/A
USB-A	N/A

Wireless Specifications (Wireless LAN)

Supported Speed For Each Mode

IEEE 802.11b	11 Mbps *3
IEEE 802.11g	54 Mbps *3
IEEE 802.11n	130 Mbps *3

Supported Connection Mode

Infrastructure, Access Point

Wireless LAN Security

WPA-PSK (TKIP/AES), **WPA2-PSK** (TKIP/AES)

Adjustment Functions

Six Axis Colour Adjustment	Yes
Picture In Picture	Yes
Aspect Mode	Yes (Auto / Normal / Full / Zoom)
Frame Interpolation	Yes

Operating Temperature

5°C - 35°C <41°F - 95°F> (0 m / 0 ft - 2,286 m / 7,500 ft)

5°C - 30°C <41°F - 86°F>
(over 2,286 m / 7,500 ft) (20% - 80% humidity, No condensation)

Operating Altitude

0 m - 3,000 m <0 ft - 9,843 ft>

(over 1500 m / 4,921 ft: with high altitude mode)

Direct Power On/Off

Yes / N/A

Start-Up Period

Under 18 seconds (Warm-up period: 30 seconds)

Cool Down Period

7 seconds

Power Supply Voltage

100 V - 240 V AC ±10%, 50/60 Hz

Power Consumption (220 V-240 V)

Lamp On (High/Medium/Low) **364 W / 340 W / 279 W**

Standby (Network On / Off) **2.9 W / 0.4 W**

Dimension Excluding Feet

304 mm(D) x 410 mm(W) x 157 mm(H)

Weight

Approx. 6.9 kg

Fan Noise (High/Medium/Low)

35 dB / 32 dB / 24 dB

Warranty

2 Years for projector against standard manufacturing defects , 1 Year or 1000 hours on Lamp, whichever comes first

Supplied Accessories

Power Cable: 3m
Remote Control: Yes,
with Alkaline AA Battery x 2
User Manual

Optional Accessories

Spare Lamp: ELPLP85
Air Filter: ELPAF39
Wireless LAN unit: ELPAP10
WirelessHD Transmitter
3D Glasses: ELPLS03 (RF Type)
3D Glasses Charger: ELPAC01

the Impresser



EH-TW8300

FULL
HD

4K
Enhancement

3D

300
↗
↖
762 cm

HDR

HDR (High Dynamic Range) compatibility breathes new life to colours

4K enhancement offers unbelievable sharpness and visual detail

Motorised lens for easy switching between cinema ratios

Powerful and stunning design

SPECIFICATIONS

Projection Technology **RGB Liquid Crystal Shutter Projection System**

Specifications of Main Parts

LCD	Size	0.74" wide panel with MLA (D9, C2Fine, 12 bit, OD)
	Native Resolution	1080p
Projection Lens	Type	Optical Zoom (Powered) / Focus (Powered)
	F-Number	2.0 - 3.0
	Focal Length	22.5 mm - 46.7 mm
	Zoom Ratio	1 - 2.1
	Throw Ratio	1.35 - 2.84 (Wide - Tele)
Lamp	Type	250 W UHE
Life (High / Medium / Eco)*1		3,500 hours / 4,000 hours / 5,000 hours

Screen Size (Projected Distance)

Zoom : Wide	50" - 300" (1.48 m - 9.08 m)
Zoom : Tele	50" - 300" (3.13 m - 18.99 m)
Standard Size	100" screen (3.00 m - 6.30 m)

Brightness*2

Colour Light Output (Normal)	2,500 lm
White Light Output (High/Medium/Low)	2,500 lm / 1,300 lm / 640 lm

Contrast Ratio **1,000,000:1**

Internal Speaker(s)

Sound Output **N/A**

Geometric Correction

Vertical / Horizontal Keystone **±30° / N/A**
Quick Corner **N/A**

Lens Shift Range

Vertical Lens Shift **±96.3%** (H Center, Powered)
Horizontal Lens Shift **±47.1%** (V Center, Powered)

Connectivity

Analog Input	D-Sub 15pin (Blue-molding) x 1
Digital Input	HDMI x 2 (HDCP supported)
	HDMI (Wireless HD) Yes (4K x 2K)
Audio Out	N/A
USB Interface	USB Type A 2 (1 port for Firmware update and Wireless LAN, the other port for opt. HDMI cable)
	Micro USB Type B 1 mini-USB (for service and Firmware update)
Control I/O	RS-232C 1 x RS-232C
	Trigger-Out (12V) 3.5 mm Mini-jack x 1
Network	Wired LAN RJ45 x 1
	Wireless Optional (ELPAP10)

WirelessHD Transmitter I/O

HDMI (Input)	N/A
HDMI (Output)	N/A
Audio Output	N/A
USB-A	N/A

Wireless Specifications (Wireless LAN)

Supported Speed For Each Mode

IEEE 802.11b	11 Mbps³
IEEE 802.11g	54 Mbps³
IEEE 802.11n	130 Mbps³

Supported Connection Mode

Infrastructure, Access Point

Wireless LAN Security

WPA-PSK (TKIP/AES), **WPA2-PSK** (TKIP/AES)

Adjustment Functions

Six Axis Colour Adjustment	Yes
Picture In Picture	Yes
Aspect Mode	Yes (Auto / Normal / Full / Zoom)
Frame Interpolation	Yes

Operating Temperature

5°C - 35°C <41°F - 95°F> (0 m / 0 ft - 2,286 m / 7,500 ft)
5°C - 30°C <41°F - 86°F> (over 2,286 m / 7,500 ft)
(20% - 80% humidity, No condensation)

Operating Altitude

0 m - 3,000 m <0 m - 9,843 ft> (over 1500 m / 4,921 ft: with high altitude mode)

Direct Power On/Off

Yes / N/A

Start-Up Period

Under 19 seconds (Warm-up period: 30 seconds)

Cool Down Period

16 seconds

Power Supply Voltage

100 V - 240 V AC ±10%, 50/60 Hz

Power Consumption (220 V-240 V)

Lamp On (High/Medium/Low)	355 W / 271 W (High / Eco)
Standby (Network On / Off)	2.4 W / 0.35 W

Dimension Excluding Feet

304 mm(D) x 410 mm(W) x 157 mm(H)

Weight

Approx. 11.0 kg

Fan Noise (High/Medium/Low)

31 dB / 24 dB / 20 dB

Warranty

2 Years for projector against standard manufacturing defects, 1 Year or 1000 hours on Lamp, whichever comes first

Supplied Accessories

Power Cable: 3m
Remote Control: Yes, with Alkaline AA Battery x 2
User Manual
HDMI Cable Clamp: 2
3D Glasses with USB cable for charging: 1

Optional Accessories

ELPLP89
Air Filter: ELPAF39
Wireless LAN unit: ELPAP10
Wireless HD Transmitter
3D Glasses: ELPGS03 (RF Type)
3D Glasses Charger: ELPAC01

the Visual Beast



EH-TW10500

FULL
HD

4K
Enhancement

3D

300
↗
↙
762 cm

HDR

Beyond-cinema-hall
quality dual laser light
source projection

4K enhanced pictures and
a super-silent fan for a breath-taking experience

Unprecedented black levels
with Absolute Black Contrast Ratio

Glamorously powerful and
sleek black design

SPECIFICATIONS

Projection Technology	RGB Liquid Crystal Shutter Projection System	Display Performance	1920 x 1080 native 1080p; HD, 2D, 3D, 2D to 3D conversion
Projection Methods	Front / rear / ceiling mount	Super Resolution / 4K Enhancement*1	Off / 1 / 2 / 3 / 4 / 5 / 4K-1 / 4K-2 / 4K-3 / 4K-4 / 4K-5
Driving Method	Epson Poly-silicon TFT active matrix, 0.74" wide panel Reflective HTPS	Frame Interpolation	Off / Low / Normal / High (2D and 3D Mode)
Projected Output	HD, 2D, 3D, 1080p	Colour Modes	Dynamic, Living Room, Natural, THX, Cinema, Adobe RGB, Digital Cinema, 3D Dynamic, 3D Cinema, 3D THX
Pixel Number	2,073,600 dots (1920 x 1080) x 3	Input Signal HDMI	480i / 576i / 480p / 576p / 720p / 1080i / 1080p / 4K x 2K
Brightness*3		Terminal Inputs	2 HDMI, 1 RS-232c, 1 RCA (composite), 3 RCA (component), 1 VGA D-sub 15 pin (computer input), 1 Wired LAN (RJ45, 100 Mbps) for command and control only, USB mini x 1 (service and firmware update)
Colour Light Output	1,500 lm		
White Light Output	1,500 lm		
Aspect Ratio	Native 16:9 widescreen (4:3 resize) Compatible with 4:3 and 2.35:1 video formats with Normal Full or Zoom Modes		
Native Resolution	Native 1080p (1920 x 1080)		
Laser Type	Laser Diode 41.9mW (Output)		
Light Source Life*2	14,000 hours (High)		
	26,000 hours (Medium)		
	30,000 hours (Eco)		
Size (Projected Distance)	30" to 300" (0.83 m to 8.57 m)(Zoom:Wide)	Trigger Out	3.5 mm Mini-jack x 2
	30" to 300" (1.79 m to 18.19 m) (Zoom:Tele)	Computer Compatibility	PC, Mac®
	Standard size: 100" (2.83 m to 6.04 m)	Fan Noise	19dB (4K Enhancement: Off)
Throw ratio	1.28 (Zoom:Wide) to 2.73 (Zoom:Tele)	Power Supply Voltage	100 V - 240 V AC ± 10%, 50/60 Hz
Contrast Ratio	Absolute Black (Full White 1,500 lm / Full Black 0 lm)	Power Consumption	220 V - 240 V AC, Laser on 442W. Laser on (ECO) 262W Standby Mode, Communication: On 3.3W / Off 0.38W
Projection Lens Type	Powered optical zoom / Powered focus	Dimensions (D x W x H)	553 mm x 550 mm x 238 mm
F-Number	2.5 - 3.7	Weight	18 kg
Focal Length	21.3 mm - 44.7 mm	Aspect Mode	Auto / Normal / Full / Zoom / Anamorphic Wide / Horizontal Squeeze
Zoom Ratio	1 - 2.1		
Powered Lens Shift		Warranty	2 Years for projector against standard manufacturing defects , 1 Year or 1000 hours on Lamp, whichever comes first
Vertical	90% max (up and down with horizontal centered)		
Horizontal	40% max (left and right with vertical centered)		
Lens Cover	Powered, slide lens shutter	Supplied Accessories	
Lens Iris	Fine adjustments		Power Cable: 3 m
Lens Position	The following 3 items are saved in memory: Lens Shift Position, Zoom Position, Focus Position		Remote Control: Yes, with battery included
Memory Positions	10 (Memory 1 - 10)		3D Glasses: ELPGS03 (RF Type) x 2 units
			User's Manual Set
			Cable Cover
			HDMI Cable Clamp x 2 units

EPSON

EXCEED YOUR VISION

EPSON INDIA PVT. LTD.

12th Floor, The Millenia, Tower A, No.1, Murphy Road, Ulsoor, Bangalore - 560 008.
Tel: 080 3051 5000. Fax: 080 3051 5005

REGIONAL OFFICES

Ahmedabad 3314 8500/01, Chennai 3967 7500, Cochin 4012 315, Coimbatore 98942 19200, Hyderabad 6463 9640/41,
Jaipur 96808 52132, Kolkata 6500 9370/77, Mumbai 3079 8200, New Delhi 3312 0300/01, Pune 3028 6000/05

EPSON HELPLINE

For product info or service - 1800 425 0011. For service - 1860 3000 1600 (9AM - 6PM) (Mon - Sat)

Email: emp@eid.epson.co.in | www.epson.co.in

¹Diagonal screen size. ²Compared against similarly-priced leading 1-chip DLP® business and education projectors based on NPD data from July 2011 through June 2012 (available at www.npd.com). Colour brightness (colour light output) measured in accordance with IDMS 15:4. Actual colour brightness will vary depending on actual usage conditions. 3LCD® is a registered trademark of Seiko Epson Corporation. DLP® is a registered trademark of Texas Instruments, Inc. and its use here does not imply any affiliation with or endorsement by them. Note: ³2D-3D function cannot be used simultaneously with other specialised video processing functions like 4K enhancement, image interpolation etc. Source: Futuresource Consulting.

¹ Lamp life will vary depending upon mode selected, environmental conditions and usage. Lamp brightness decreases over time.

² Colour brightness (colour light output) and white brightness (white light output) will vary depending on usage conditions. Colour light output measured in accordance with IDMS 15:4; white light output measured in accordance with ISO 21118.

³ Maximum speed and range is achievable when used with same enhanced mode technology. Actual data rates, features and performance may vary depending on your computer system, the environment and other factors.